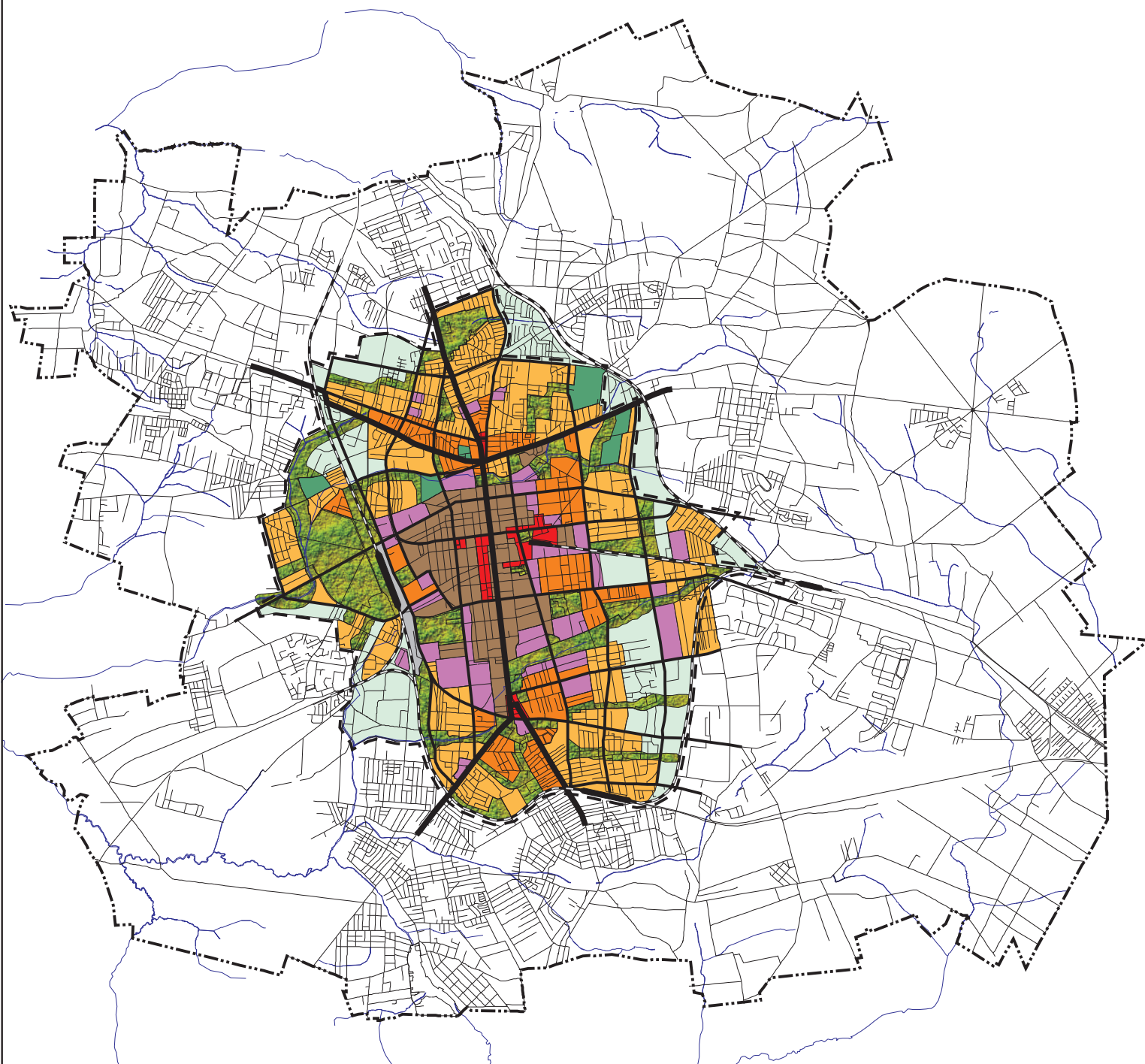


The city's spatial and urban development planning in historical approach

1917 DEVELOPMENT PLAN



1934 GENERAL DEVELOPMENT PLAN



KEY:

- | | |
|---|--|
| City boundary as of 2001 | Cemeteries |
| Plan boundary | Forests |
| Downtown built-up area | Agricultural and other undeveloped areas |
| Areas with multifamily housing developments | Airport |
| Areas with single-family housing developments | Rivers and reservoirs |
| Areas with industrial and warehousing developments | Central canal and river port |
| Area with tertiary developments city and district centres | Motorways |
| Conurbation centres | Express roads |
| Urban green areas | Ordinary roads |
| | Railway lines, stations and stops |
| | Metro, fast tram, urban railway |

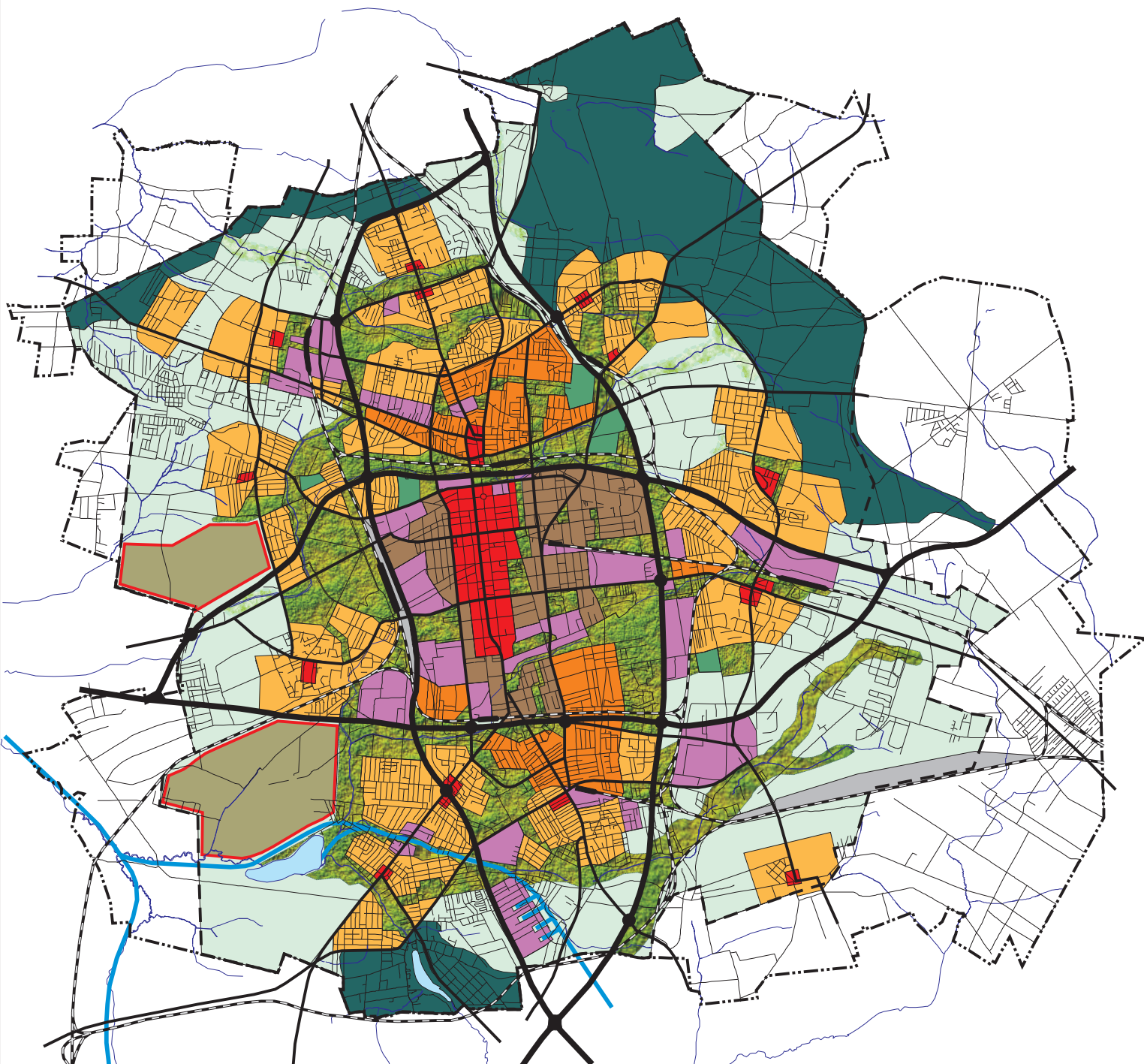
approximate scale 1: 100 000

This Sheet XLII presents selected development plans for Łódź which due to their thematic aspects and legal status have strongly affected the city's spatial development. The original documents are shown in a uniform format and scale against the present-day configuration of roads, railways, and rivers.

The plans have been prepared by Ewa Krakowska & Jadwiga Szewczyk based on:

- the original plans or their certified copies from the period when the original plans were executed
- sketches of Łódź's 19th and 20th c. spatial development plans; graphic preparation: Wacław Bald - *Miscellanea Łódzkie* 1/1984, (ed. by the Museum of Łódź History), and the author's sketches representing the property of the City Museum
- Wacław Bald & Eugenia Jastrzębska - *Planowanie przestrzeni w PRL*, ed. by the Łódź History Museum
- Henryk Jaworowski & Wojciech Walczak - *Planowanie przestrzenne w procesie rozwoju Łodzi, w latach 1918-1938*, ed. by the Łódź History Museum

1949 SPATIAL DEVELOPMENT PLAN - SYNTHETIC PLAN



1961 GENERAL DEVELOPMENT PLAN - 1980 DIRECTIONAL PLAN



1972 GENERAL LOCAL DEVELOPMENT PLAN - PROSPECTS

