

This Sheet XVII consists of six maps at a scale of 1: 150 000. Their respective themes are as follows: 1. Overall employees 2. National economy entities as per payroll 3. Employed outside agriculture as per economic activity 4. Employed in private farming 5. Employed as per proprietary sectors of the national economy 6. Employed working for self-employed. Each socio-economic category of Łódź's population is described as in January 2001, apart from map 4 concerning employees in agriculture. The information provided on this map refers to the Agricultural Census 1996. In order to accurately illustrate the spatial structure of each community, the maps show the city in breakdown into 215 surveying districts. Only the map dedicated to employees in agriculture shows Łódź as divided into 88 agricultural districts projected on the warp of the surveying districts.

To adequately interpret the data visualised in this sheet a short commentary on the methods applied is required. The term 'employees' relates to persons in gainful employment or earning profit. Employees include both employers and employees. The group of employees does not include persons working for foundations, associations, political parties, trade unions, organizations of employers, and economic or professional associations.

National economy entities are understood to be legal persons, self-reliant organizations without legal personality, as well as self-employed enterprises.

The data concerning the employees' economic activities were usually classified using the enterprise method, taking into account their actual location. In the case of some large firms, especially supermarkets, the company method was applied. The industrial and construction sectors include: mining and quarrying, manufacturing, electricity production and distribution, gas and water supply, and the construction industry. Market services include the following: trade and repair, hotels and restaurants, transport, financial intermediation, renting and operating of own or leased real estate, whereas non-market services include: public administration and national defence, national insurance, education, health care and social aid, and expert organisations.

The division of employees as per the proprietary structure of economic entities, the public includes: state ownership, local government ownership, as well as mixed ownership with prevailing public capital (assets). On the other hand, the private sector incorporates domestic private ownership, foreign ownership, as well as mixed ownership with prevailing private capital (assets).

The sheet has been compiled utilising the information from the National Official Business Register REGON, made available by the Office of Statistics in Łódź. The said register is considered as a reliable source, however, it is not yet an exhaustive one. It does not contain the data concerning a large part of private farms, since they are not obliged to register with REGON. In addition, some of the business entities may not be ongoing, although they have a register entry. REGON contains registration details as provided by business entities, and their full verification is not possible. Branches of registered companies are not treated as separate entities and company headquarters are, as a rule, treated as their present place of operation. However, as a matter of necessity some entities are registered under the home address of their owners, for example travelling salespeople or insurance agents.

The range of the data used to develop the maps includes the data from statistical payroll reports. The 1996 Agricultural Census materials, representing a separate source, did not include densely built-up areas in large cities. Employees in agriculture were considered as exclusively or mainly and additionally working on household farms with the user of the farm and individual agricultural allotment. The retrospective data concerning business entities and employees in Łódź in the transformation period come from unpublished material from the Office of Statistics in Łódź and from the statistical yearbooks (Statystyka Łodzi): 1996–2000.

The map sheet shows the spatial variability of the present socio-occupational structure of the population in Łódź at the time when it was undergoing fundamental transformations in the period of transition to market economy. They are reflected, e.g. in the almost threefold increase (from 26 600 to 80 800) in the number of registered entities of the national economy from 1992 to 2000 (tab. 1). On the other hand, noticeable is a general decrease in economic activity, measured by number of employees (fig. 1). In the period 1990–2000, the number of employees, excluding employees in private farming, decreased by 92 300 (from 304 500 to 212 200). In the same period particularly undesirable socio-economic and psychosocial consequences were brought about by a drop (to 62 800) in the number of employees in industry.

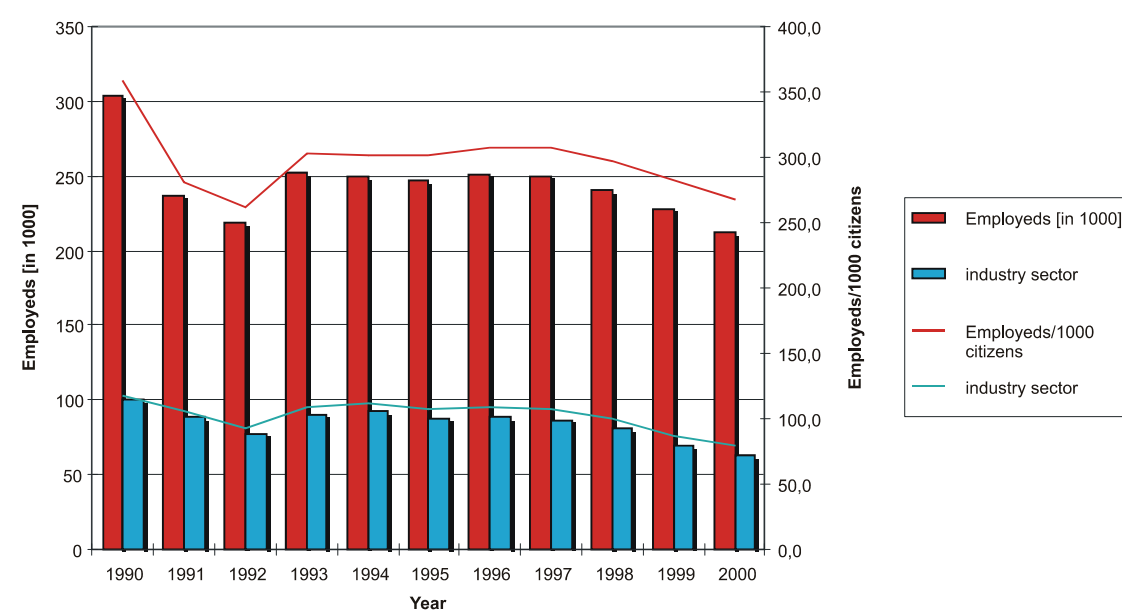


Figure 1. Number of employees excluding employees in private farming in 1999–2000

The spatial distribution employees within Łódź is strongly diversified (map 1). Recorded is a high concentration of employees in the central part of the city and beyond in industrial and warehousing districts (Teofilów Przemysłowy, Zarzew Przemysłowy, Dąbrowa Przemysłowa and Nowe Sady) as well as in larger microdistricts (Teofilów, Ragodoszcz, Widzew Zachód and Wschód, Olechów, Zarzew, Dąbrowa, Chojny Zatorze and Retkinia). This area, with no more than 17 surveying districts with more than 5 000 employees, embraces almost

a half of the overall number of employees (43.1%). Generally speaking, the number of economic entities which can be identified as employers increases in line with the population density (map 2). However, the highest average employee count per economic entity (greater than 15) is recorded in industrial and warehousing districts, where relatively few firms are located.

Table 1. Entities of the national economy in Łódź as per economic and proprietary sector: 1992–2000 (as on 31.12)

	a – 1992 b – 1996 c – 2000 d – index of change: 2000 (1992=100)	Total	Public sector	Private sector
Overalla	28616.0	994.0	27622.0
b	67772.0	932.0	66840.0
c	80832.0	1744.0	79088.0
d	282.5	175.5	286.3
which includes				
Industrya	7519.0	168.0	7351.0
b	13572.0	139.0	13433.0
c	13150.0	98.0	13052.0
d	174.9	58.3	177.6
Constructiona	1759.0	38.0	1721.0
b	5050.0	25.0	5025.0
c	6742.0	20.0	6722.0
d	383.3	52.6	390.6
Trade and repaira	13419.0	58.0	13361.0
b	25373.0	45.0	25328.0
c	27319.0	36.0	27283.0
d	203.6	62.1	204.2
Transport, warehousing and communicationa	1019.0	20.0	999.0
b	5297.0	17.0	5280.0
c	6823.0	12.0	6811.0
d	669.6	60.0	681.8
Renting and business activities; sciencea	2460.0	85.0	2375.0
b	9541.0	77.0	9464.0
c	11901.0	802.0	11099.0
d	483.8	943.5	467.3

Within the territory of Łódź identified have been 6 districts with strong employment concentrations in industry and construction, including: 1. Nowe Miasto – Zielona – Centrum. 2. Widzew Zachód – Fabryczna – Dąbrowa Zachodnia – Górny Rynek. 3. Teofilów Przemysłowy. 4. Zarzew Przemysłowy – Dąbrowa Przemysłowa. 5. Nowe Rokicie – Nowe Sady. 6. Ruda (map 3). Meanwhile, in line with the general pattern, the number of employees in market and non-market services increases centripetally, remaining in positive correlation with the density of housing development. Then, in turn, employees in farming play a major role in the sparsely populated rural-urban fringe, where a significant proportion of land use is still agricultural (map 4). Most of those areas were incorporated into Łódź only after WWII.

Employees in the public sector usually outnumber those in the private one in the central part of Łódź, while private sector employees outnumber public sector employees in the rural-urban fringe (map 5). At the same time, one may observe that the spatial distribution of employees in small private firms that dynamically developed during the transformation period, strongly resembles the population density patterns (map 6). Their proportion in the overall number of employees in the private sector increases centrifugally.

Literature and sources

M i c h a ł s k i W., *Transformacja społeczno-ekonomiczna Łodzi na tle regionu*, BPR CUP w Łodzi, PTG, Łódź 1996.

O b r a n i a k W., *Struktura demograficzna i społeczno-ekonomiczna ludności Łodzi*, Urząd Statystyczny w Łodzi, Łódź 1997, Seria „Analizy Statystyczne”.

P i o t r o w s k i W., *Spoleczno-przestrzenna struktura miasta Łodzi. Studium ekologiczne*, Ossolineum, Wrocław-Warszawa-Kraków 1966.

R y k i e l Z., *Przemiany społeczno-przestrzennej struktury Łodzi*, [w:] XI Konferencja Naukowa o Mieście, Łódź 1999.

Łódź Statistics for 1996–2000, Office of Statistics in Łódź.

National Official Register of National Economy Entities.

Statistical employment reports.

National Agricultural Census.