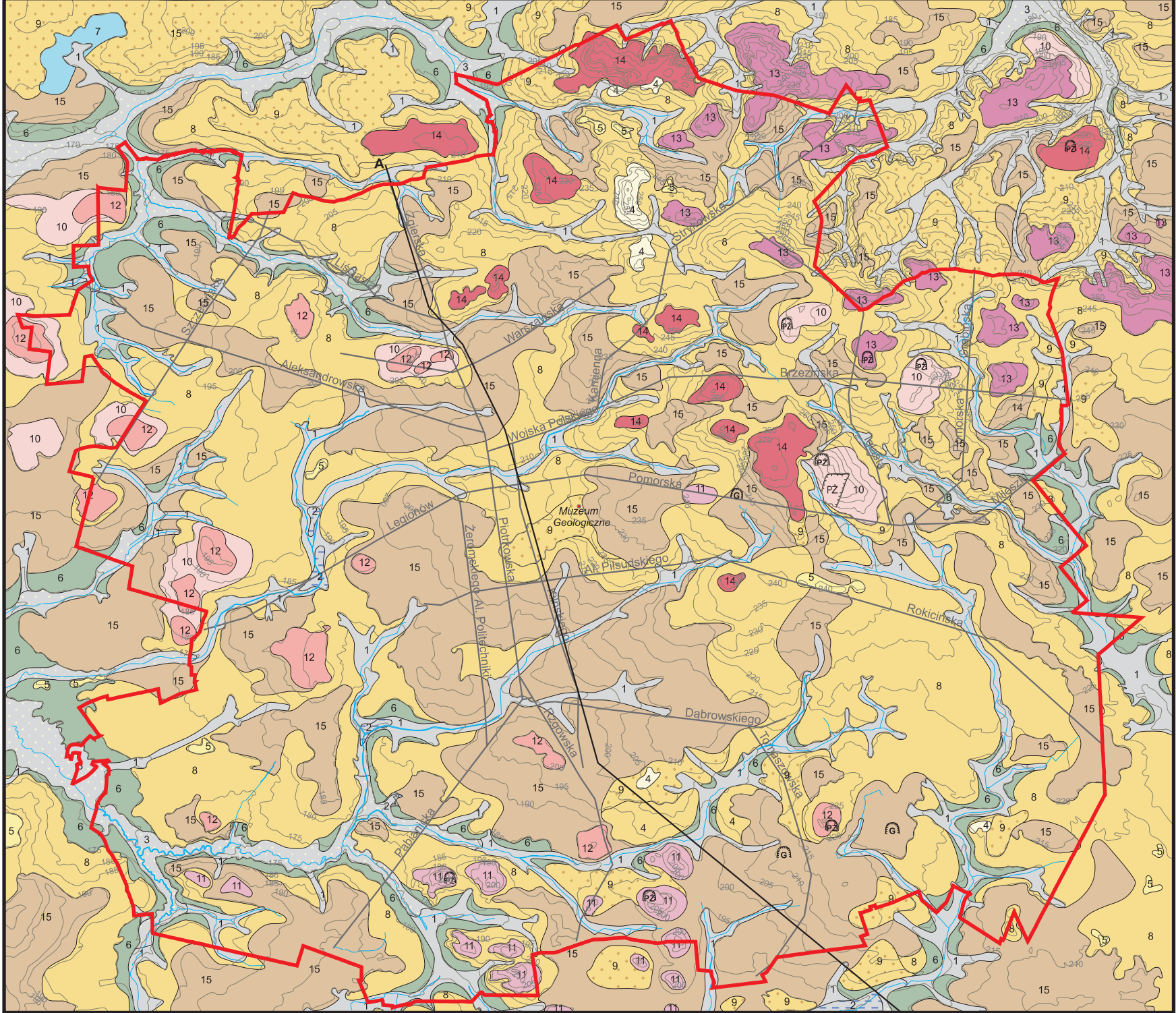


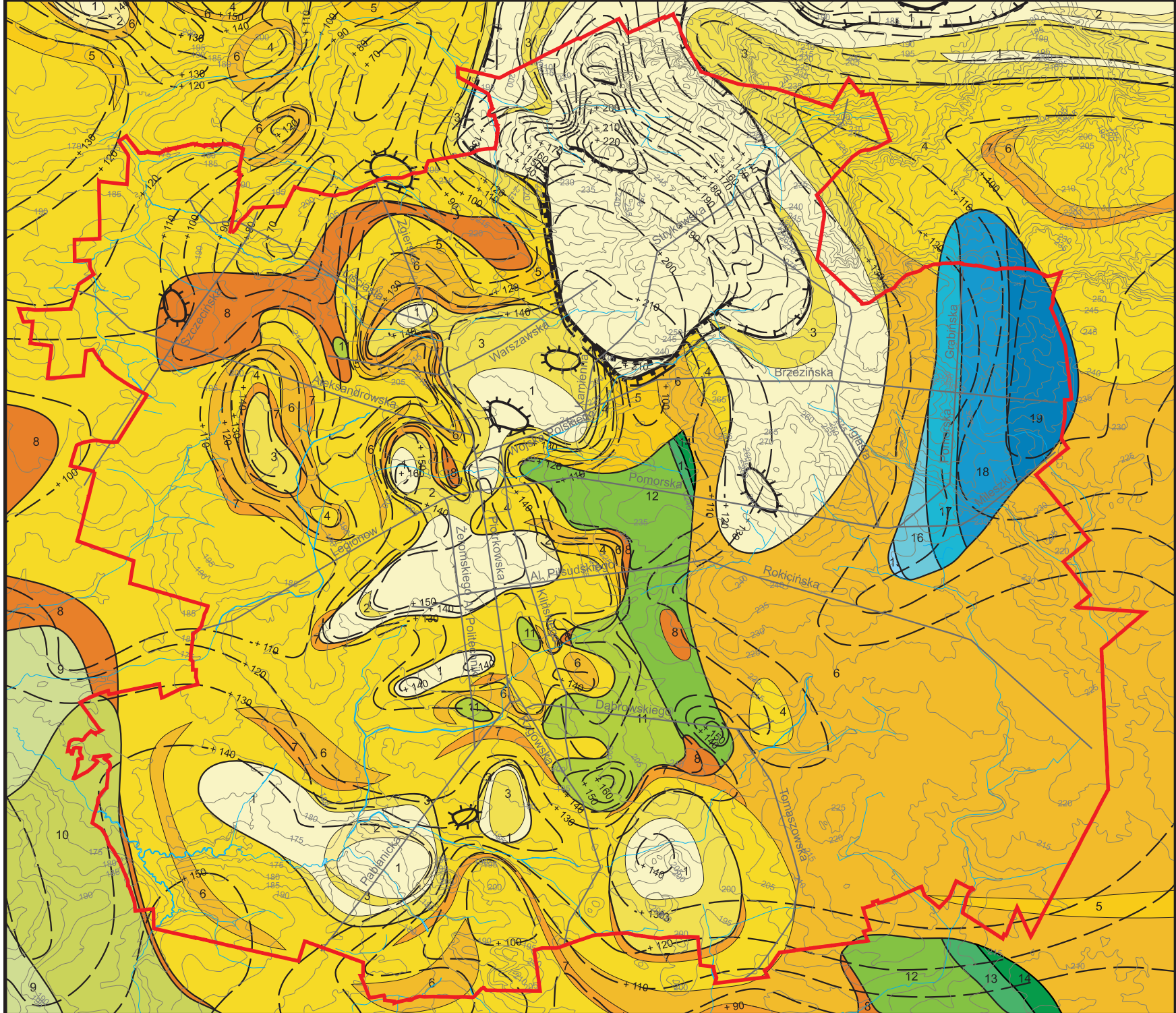
Geology and soils

1. GEOLOGY SURFACE DEPOSITS



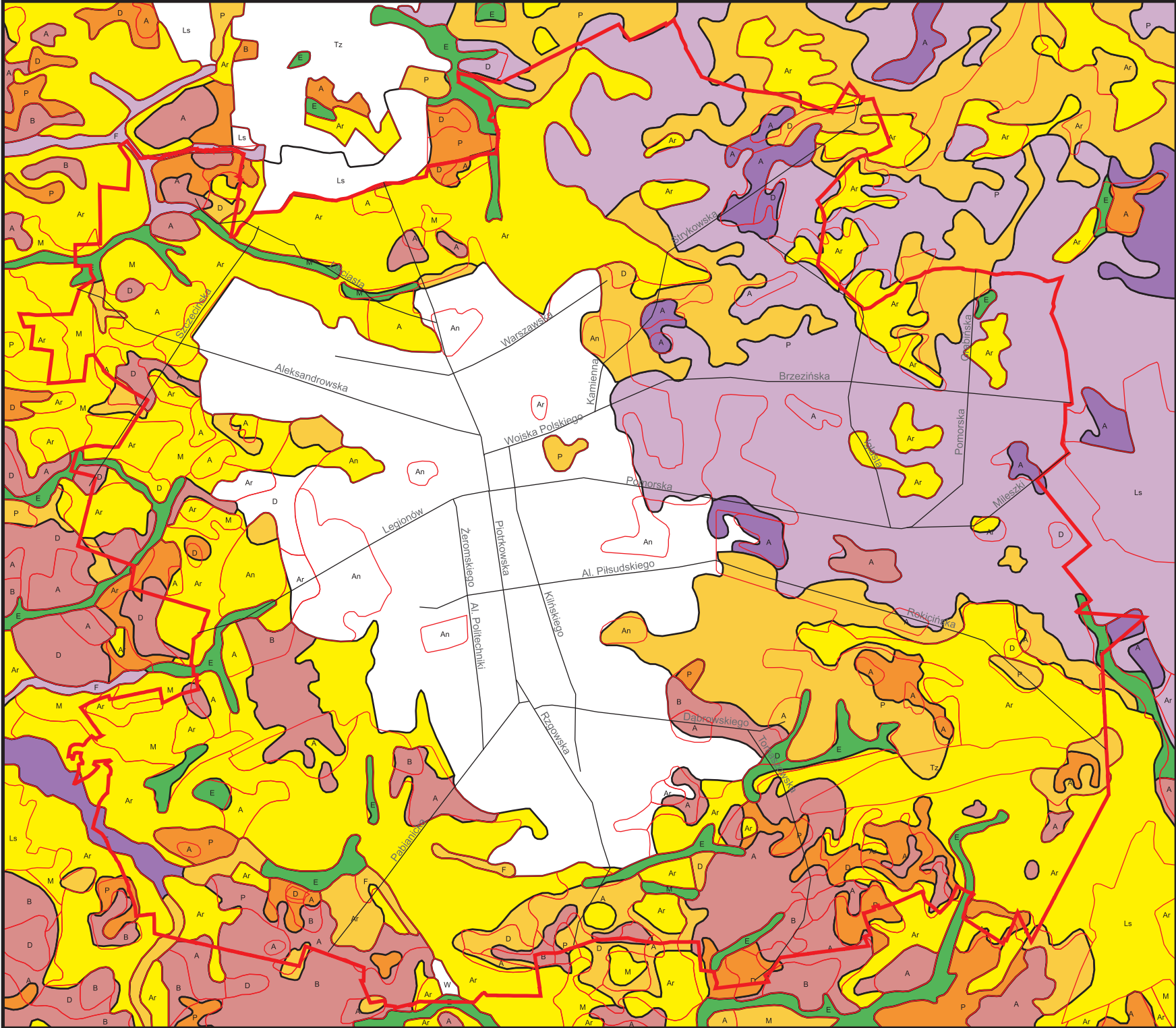
Jan Ziomek

2. GEOLOGY - DEPOSITS OLDER THAN THE QUATERNARY



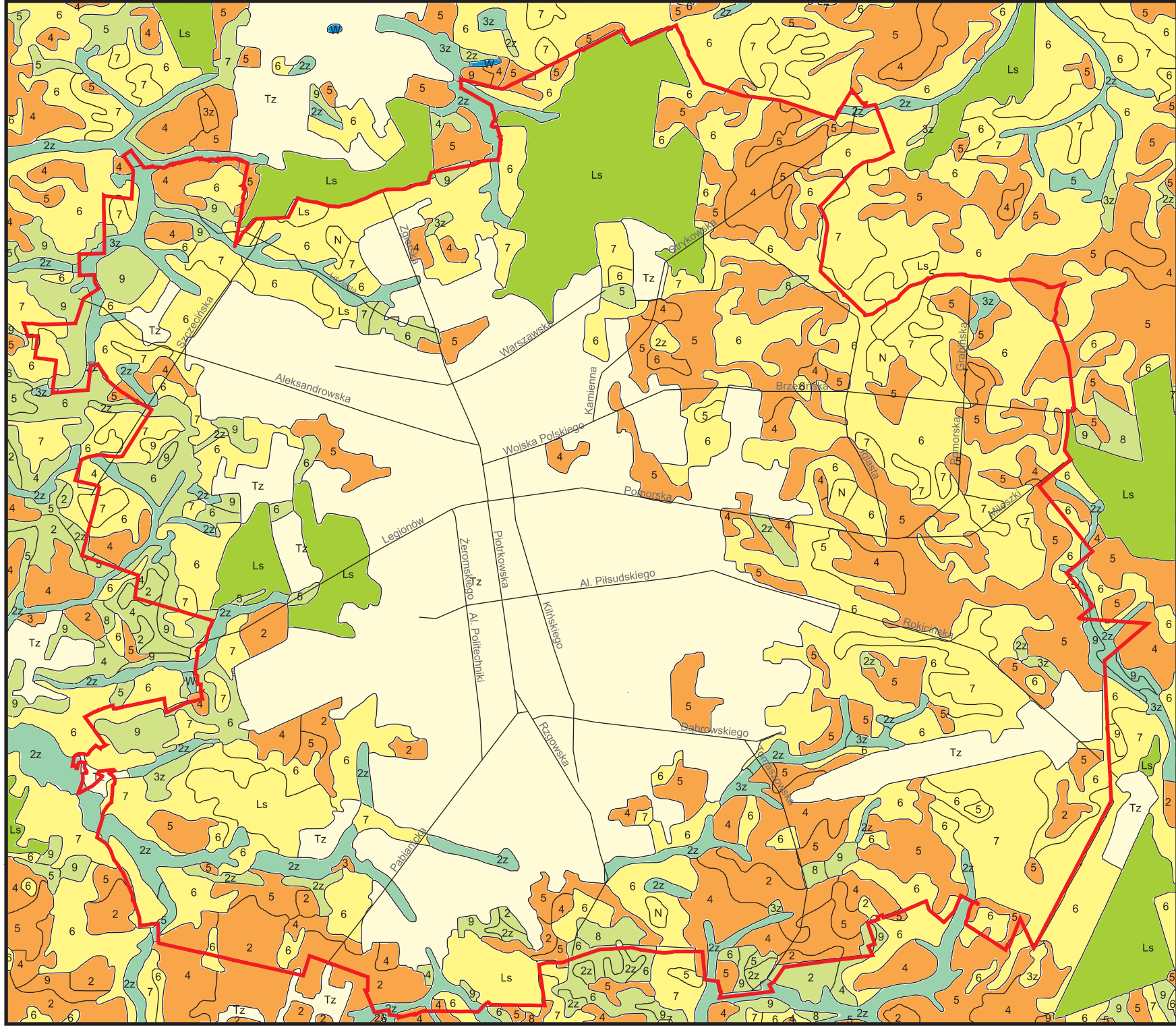
Jan Ziomek

3. TYPES OF SOILS AND SOIL REFERENCE GROUPS



Stanisław Laskowski, Tadeusz Iwańcz

4. GEOCOMPLEXES AND COMPLEXES OF SOILS FIT FOR AGRICULTURAL USE



Elżbieta Papińska, Tadeusz Iwańcz

Scale
1 : 100 000